

# Learning & Development

## Concepts

**SCORM and xAPI** Flare Desktop supports technical standards (e.g., SCORM - 1.2 and 2004, xAPI - Tin Can) that allow eLearning courses and learning management systems (LMS) to work together. You can upload eLearning zip file packages for the LMS to host (for tracking progress, maintaining coursework, and distribution).

**Getting Started** You can create simple tests from project eLearning templates, or create eLearning content and custom courses from the ground up if you have an existing project.

**Reusing Content** Single-sourcing lets you reuse content or “chunks of training” to produce multiple outputs from the same set of source files; leveraging content for different purposes.

## Types of Courses

**Quiz** Consists of test questions with specific answers that are graded. A quiz is a basic way to determine a level of knowledge.

**Knowledge Check** Consists of a learning exercise with interactive content and question sections to help the learner grasp the information. It is not formally graded, and it does not determine mastery.

**Combination** Includes a knowledge check and a quiz, but only the quiz gets graded at the end of the course.

## Basic Process

1. Create a project based on one of the eLearning templates.
2. Replace the eLearning content with your own.
3. Build the target.

## Tips

**Test Options** If the course is gradable, a test node needs to be enabled in the TOC.

**Navigation** Navigation is based on HTML5 output. If skins include a navigation pane, it can be hidden by setting its menu to "None."

**Feedback** Feedback for questions is optional. Use "instant" feedback in a knowledge check, and use "end-of-test" feedback for a quiz.

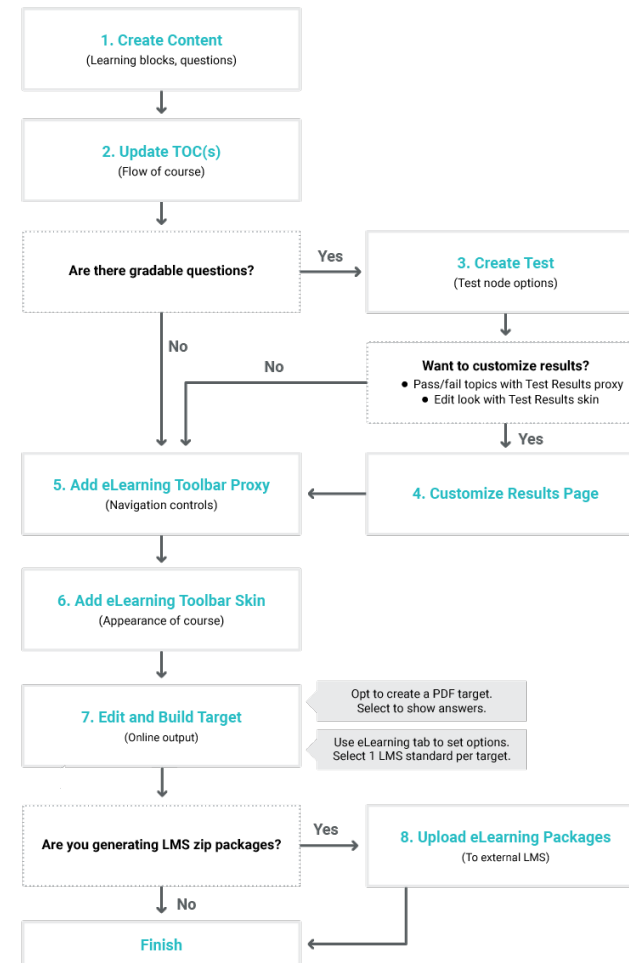
**End of Course** The end of a quiz or combo happens when the test node in the TOC generates results. For a knowledge check, the navigation toolbar for the last topic is disabled in the HTML5 output.

**LMS Course ID** The ID for xAPI is a URL, and for SCORM it's a unique identifier. A generated package includes a "tincan.xml" (xAPI) or "imsmanifest.xml" (SCORM) document in the root zip folder.

**Tracking** Select "Use Test Result" for a test only and combination, and "Use Course Completion" for a knowledge check only.

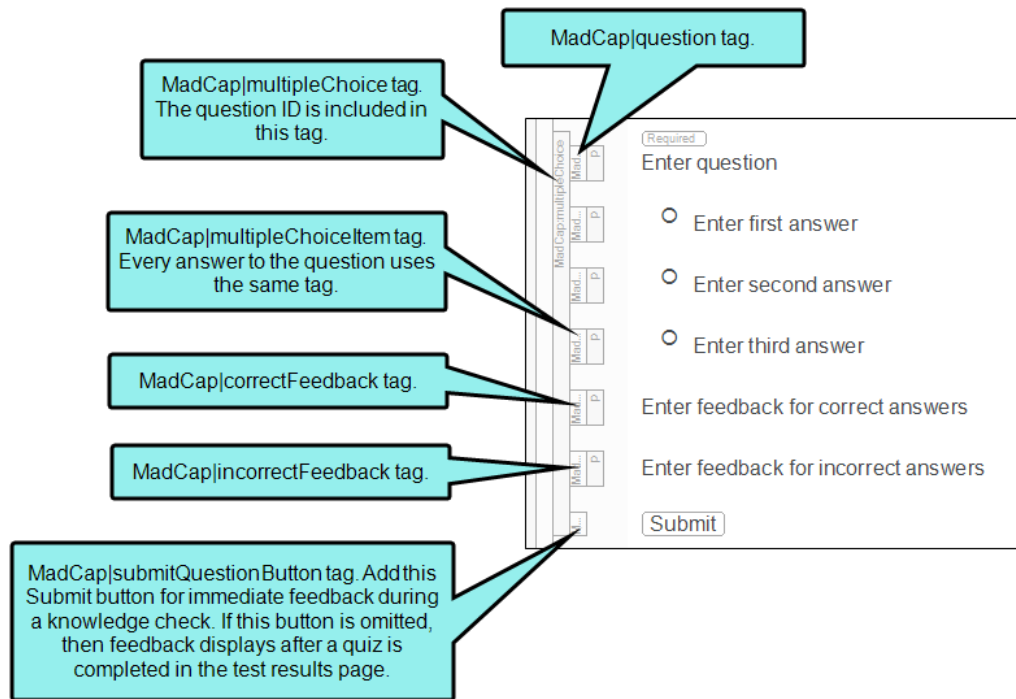
## Main Parts of a Course

The process and parts needed when creating a custom course from scratch:



## Question Sections

When you insert a question type into a topic, you are adding a "question section." The parts of a question section include the question itself, answers to the question, correct and incorrect feedback, and a submit button. In the editor, the structure bars to the left of the question sections correlate to the type of XHTML tag that is associated with the content.



## How To

### Create a Question

1. Place the cursor in an empty paragraph where you want to insert a question section.
2. From the **eLearning** ribbon, select the **Multiple Choice** button or the **Multiple Response** button.
3. Enter your question and answer.
4. To add more answers, press **ENTER** for another paragraph to display.
5. Assign the correct answer(s) by selecting the shape before it.
6. Save the active file.

### Show Answers in a PDF

1. Open a PDF target.
2. In the Target Editor, select the **General** tab.
3. In the **Output Type** drop-down, confirm **PDF** is selected.
4. In the **Primary TOC** drop-down, select the TOC for the course.
5. Select the **Advanced** tab, and under the **Output Options** section, select **Show correct answers for eLearning questions**.
6. Save and build the target.